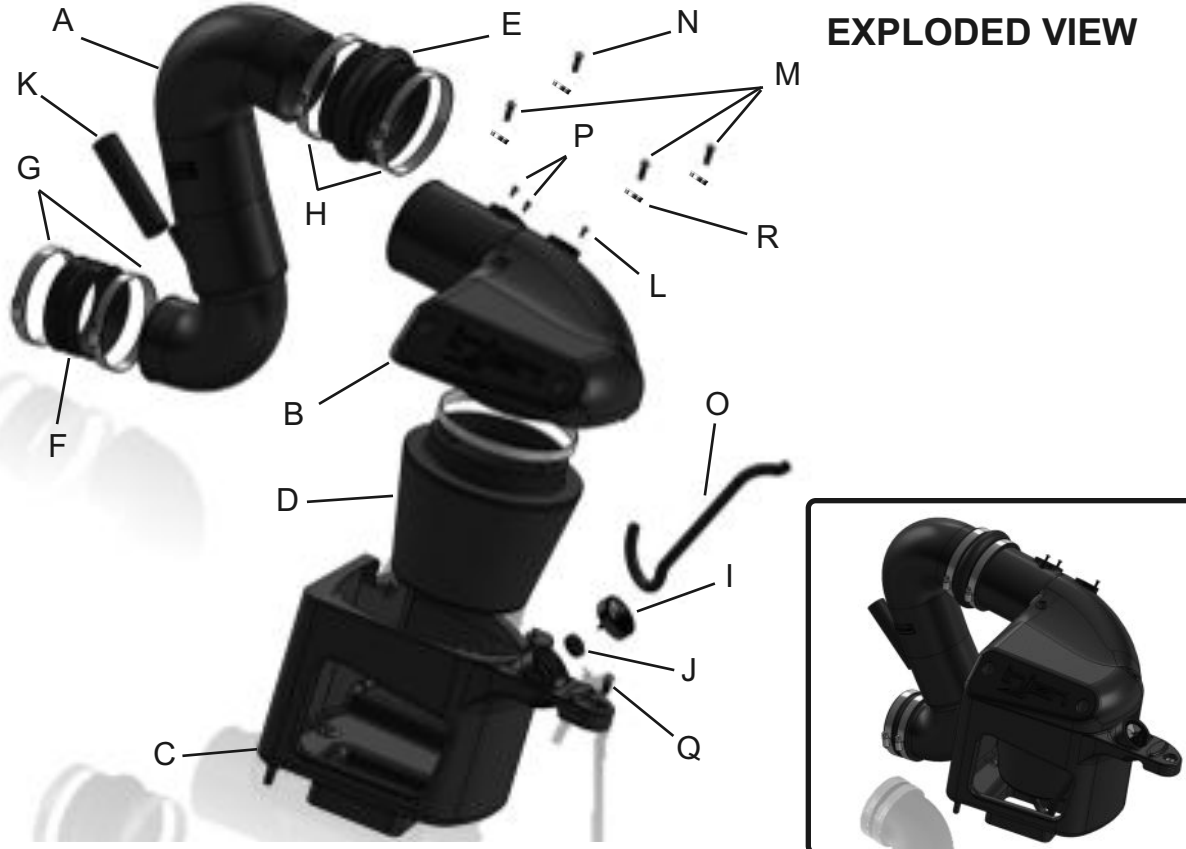




Vehicle Application:  
 Make: **Dodge**  
 Model: **Ram 2500/3500**  
 Year: **2010-12**  
 Engine: **6.7L Cummins Turbo Diesel**

**EXPLODED VIEW**



Item	QTY.	P/N	Discription
A	1	#15048	Rotormold intake tube
B	1	#15049	Rotomold Plenum
C	1	#15050	Rotomod Box
D	1	#1065	6.00" Filter
E	1	#3200	4.50" Hump Hose
F	1	#3129	4.00" Straight Hose
G	2	#4006	#64 Clamps
H	2	#4014	#72 Clamps
I	1	#15040	Filter Minder
J	1	#8026	Grommet
K	1	#3080	17mm-7" vacuum hose
L	1	#6072	M4X16 Button head Bolt
M	3	#6096	M6X25mm Bolt
N	1	#6095	M6X80mm Bolt
O	1	#3198	3mm-17" vacuum hose
P	2	#6047	M4X10 Button head Bolt
Q	1	#6068	M8X40 Bolt
R	4	#8047	1/2" OD Rubber seal washer

**TOOLS REQUIRED**

- 10mm Ratchet & Socket
- 8mm nut drive
- Allen key
- 7mm nut driver
- Philips

**WARNING:** FAILURE TO FOLLOW INSTALLATION INSTRUCTIONS AND NOT USING THE PROVIDED HARDWARE MAY DAMAGE THE INTAKE SYSTEM, ENGINE AND COMPONENTS!!!

**\*Do not attempt to install the intake system while the engine is hot.**

Severe burn could result from touching hot engine components!

Report any defective or missing parts to the authorized Injen dealer you purchased this product from. Before installing any parts of this system, please read the instructions thoroughly. If you have any questions regarding installation, please contact your Injen Technology dealer. Installation DOES require some mechanical skills. A qualified mechanic is always recommended.

A Limited Lifetime Warranty to the original purchaser against defects in material and workmanship on all Injen intake systems excluding the filter element. Any and all warranty coverage is limited to the repair or replacement of the defective part only, at Injen Technology's discretion. The warranty does not cover incidental or consequential damages, nor does it cover the cost of installation or removal of the defective part or its replacement. Proof of purchase is required.

# Instruction Manual P/N:EVO8002

**NOTE:** This intake kit may not work on vehicles with the following aftermarket modifications.

- Aftermarket Intercooler piping
- Aftermarket intercooler
- Turbo upgrade
- Modified body panels
- Suspension & Chassis modifications

Injen intake systems are street legal in most states unless the state is adopting to California Emissions standards. States that have adopted California emission standards include: Arizona, California, Connecticut, District of Columbia, Maine, Maryland, Massachusetts, New Jersey, New Mexico, New York, Oregon, Pennsylvania, Rhode Island, Vermont, and Washington. These states will require an California Air Resource Board Executive Order Number (CARB E.O.) for the legal use of an Injen intake system in your vehicle for use on public roads or highways. These vehicle will be considered "Legal in California only for racing vehicles competition use only, which may never be used upon a public street or highway. **Please keep your factory air box assembly for any future use.**



The SuperNano-Web filter media is a dry synthetic media that outperforms the competition. The media itself is a proprietary base blend of synthetics and cellulose. Cellulose fibers are larger than synthetic fibers, and have larger spaces between the fibers, causing contaminants to load in the depth of the media and plug the airflow path. This creates higher restriction levels and less capacity. The synthetic fibers in the SuperNano-Web media are submicron in diameter and have small interior fiber spaces, which result in more contaminants being captured on the surface of the media. This can help keep restriction levels low as the filter loads with dirt and containments



If you look at the picture to the left, you can see the Nano-fiber web on top of our base media. That web, or SuperNano-Web as we like to call it, helps trap smaller particles and protect your engine.

### **To Clean your filter:**

Carefully remove the filter from the housing. Once removed, wipe down the housing using a clean shop towel, being careful not to knock any dirt and/or debris in the air inlet. Your filters can be cleaned by carefully vacuuming the filter media from the dirty side, or by holding the filter with one hand and carefully blowing the filter media at a 45-degree angle from the clean side using low-pressure shop air (15-20 lbs. psi).

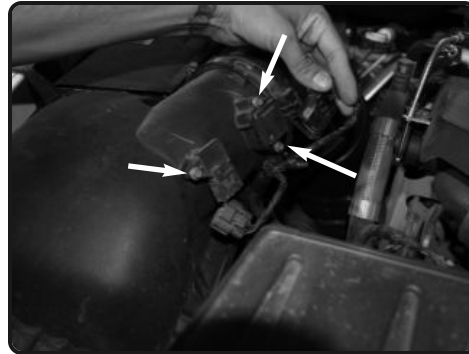
***\*IT IS IMPORTANT TO NOT USE ANY CLEANERS ON THE SUPERNANO-WEB MEDIA OR APPLY ANY OIL!!!***

**NOTE: DISCONNECT BATTERY BEFORE INSTALLATION!!!**

# Instruction Manual P/N:EVO8002



**1.** Stock intake system shown.



**2.** Disconnect the MAF/AIT sensor harness and then use a 7mm nut driver to loosen 3-7mm screws from the sensors. Remove sensors from the air box for now



**3.** Remove the 10mm nut from the air box assembly on the radiator support.



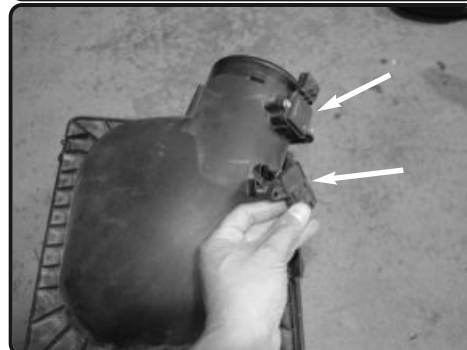
**4.** Loosen the clamp from the air duct to the air box assembly and then pull the air duct from the air box.



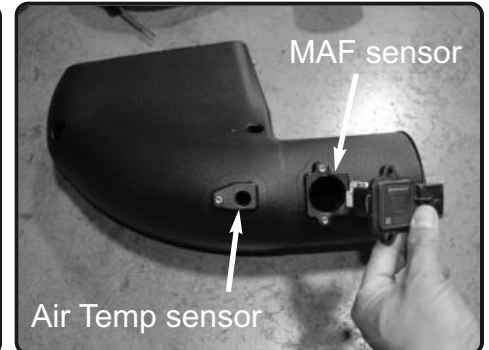
**5.** Firmly lift up on the entire air box assembly and remove it from the engine bay.



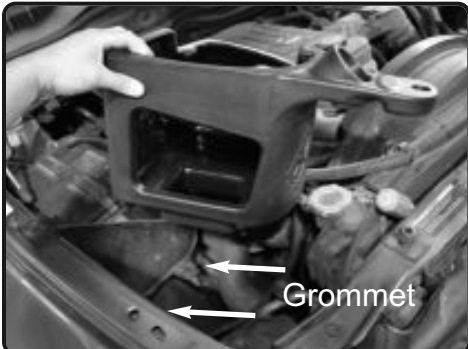
**6.** Loosen the clamp and the vacuum line on the air duct connected to the turbocharger inlet and crank case breather line and then remove the entire air duct.



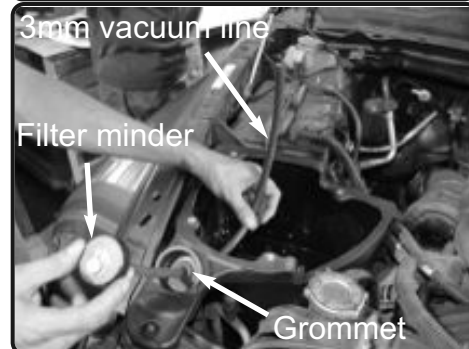
**7.** Remove the MAF/AIT sensors from the OE air box housing. These sensors will be used in the Injen intake kit.



**8.** Install the MAF/AIT sensor onto the Injen plenum. Use the 1-M4X16 bolt for the AIT sensor and 2-M4X10 bolts for the MAF sensor.



**9.** Drop the Injen intake box into the OE air box location. Line up the two mounting taps underneath the Injen air box to the two factory mounting grommets.



**10.** Place the grommet into the 7/8" hole on the Injen air box bracket and then push the filter minder with the 3mm vacuum hose attached through the grommet.

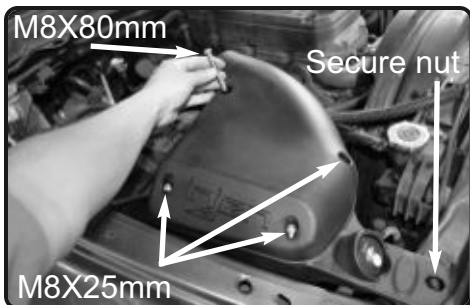


**11.** Place the filter onto the 6.00" opening on the intake plenum and then secure the clamp.



**12.** Connect the 3mm vacuum hose from figure 10 to the Filter Minder to the barbed fitting on top of the Injen filter.

# Instruction Manual P/N:EVO8002



**13.** Place the three M8X25mm bolts and one M8X80mm bolt to the top of the plenum illustrated by the photo and then secure the bolts with a philips. Use the factor 10mm nut to secure the air box bracket to the radiator support.



**14.** Place the 4.50" hump hose and two #72 clamps onto the intake plenum. Make sure you slide the hump hose as far back as you can.



**15.** Connect the 17"-7mm vacuum hose to the crank case breather line. This vacuum line will connect to the Injen intake tube in figure 17



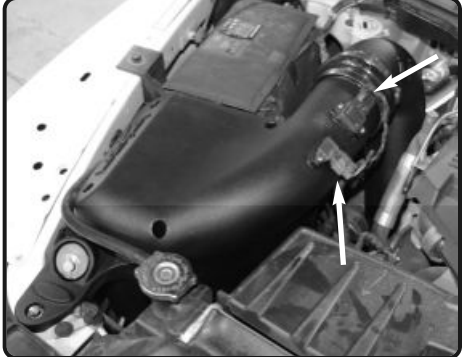
**16.** Place the 4.00" straight hose and two #64 clamps onto the turbo inlet and only secure the the clamp on the turbo side for now.



**17.** Drop the intake tube into the engine bay and connect the small end of the tube to the 4.00" straight hose on the turbo inlet. Also Connect the CCV tube to the port on the intake tube from figure 15



**18.** Push the upper part of the intake tube into the 4.50" hump hose on the intake plenum. Slide the hump hose towards the intake tube till it's centered. Adjust intake tube for best fitment and then secure all the clamps.



**15.** Re-connect the MAF/AIT sensor harness. Your installation is now complete

**Congratulations! You have just completed the installation of this intake system. Periodically, check the alignment of the intake, normal wear and tear can cause nuts and bolts to come loose. Note: Check clearance and adjust if needed! Failure to check the alignment and adjust the intake can cause damage that will void the warranty. Injen Technology is not responsible for any damages caused by/from improper installation.**

## Test Drive:

1. With the transmission in neutral or park and the parking brake engaged, start the engine. Listen for air leaks or odd noises. If air leaks are detected, secure hoses and connections. For any odd noises, inspect entire system for cause and adjust intake as needed. The Injen intake will function identically to the factory system but will be louder and more powerful.
2. Perform a road test. Listen for odd noises or rattles and fix as necessary.
3. If there are no issues, continue to enjoy your added performance from the Injen performance Intake kit.
4. Injen Technology recommends you periodically check clearance and adjust if needed! Failure to check the alignment and adjust the intake can cause damage that will void the warranty. Injen Technology is not responsible for any damages caused by/from improper installation.

1. Upon completion of the installation, reconnect the negative battery terminal before you start the engine.
2. Align the entire intake system for the best possible fit. Once the intake has been properly fitted continue to tighten all nuts, bolts and clamps.
3. Periodically, recheck the alignment of the intake system and make sure there is proper clearance around and along the length of the intake. Failure to follow proper maintenance procedures may cause damage to the intake and will void the warranty.
4. Start the engine and listen carefully for any odd noises, rattles and/or air leaks prior to taking it for a test drive. If any problems arise go back and check the vacuum lines, hoses and clamps that maybe causing leaks or rattles and correct the problem.
5. Check the filter for excessive dirt build up. Clean or replace the filter with an original Injen filter (can be bought on-line at "injenonline.com"). Congratulations! You have just completed the installation of the best intake system sold on the market. Enjoy the added power and performance of your new intake system.